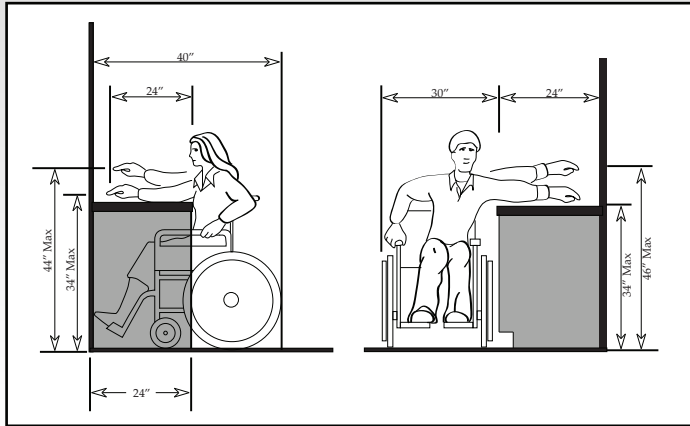


ADA REQUIREMENTS



The Americans with Disabilities Act (ADA) establishes guidelines by which people with disabilities are afforded the same or similar access to items in the workplace as those who are not disabled. Naturally, when creating an A-V environment for ADA compliance, designers are faced with decisions on how to best implement their solutions so everyone can access the equipment comfortably. At Miller's Millworks, we have been researching the potential solutions for furniture design to help your organization achieve this goal. To review some of the ADA regulations, we suggest these websites:

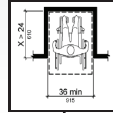
- askjan.org (Job Accommodation Network)
- disability.gov
- ADA.gov

Below are some suggestions for planning your next furniture project.

Miller's Suggestions:



1. Consider who will be using the equipment. Perhaps you have very tall users, or do your users need to present from a seated position?



2. Pay close attention to the amount of space surrounding the furniture. Is it sufficient for easy wheelchair access?



3. When deciding on hardware, U or D shaped handles are best suited for door and drawer pulls. Proper hardware can assist users with physical limitations.



4. Mount computer screens and touch panels to articulating arms. Doing so will allow seated and standing presenters the flexibility to create their own sight lines and work space. This also allows a user to control glair from overhead lighting.



5. Keep touch panels, outlets and other user features within easy reach of the presenter. These features should be mounted no further than 24" from the user.



6. Non reflective, low glare surfaces not only help with video capture and lighting, but also reduce eye strain, and can assist the visually impaired.